



## **17 m FIREFIGHTING & RESCUE VESSEL**

### **ROLES**

The design and specification of the 16 m FRV makes it highly suitable for the following roles:

- 1: Firefighting**
- 2: SAR**
- 3: Command and Control Centre**
- 4: Humanitarian and Disaster relief and rescue**

### **Main Characteristics:**

Hull Type	Monohull
Displacement	35.00 t
Length Overall	16.66 m
Length Hull	16.00 m
Length Water line	14.81 m
Breadth	5.00 m
Max Draught	1.42m
Max Speed	27 kt
Service Speed	22 kt
Fuel	3,000 Litres
Fresh Water	200 Litres
Black/Grey	200 Litres

**Classification:**

Classification society	BV Hull and Machinery
Classification code	MCA
Sea State Code	2
Flag state	UK
Operational Area	Coast Waters UK and Europa

**Passenger Capacity:**

Crew	6
Passengers	6

**Operational Features:**

Operating time 24 hr  
 Power sockets fwd deck  
 Power sockets aft deck  
 Sufficient storage area for tools, equipment and luggage  
 All lighting LED  
 Full monitoring of main engines, gen set, tanks and alarms at the helm 2 x 17 "LCD displays.

**Fire Fighting:**

2 x remote controlled monitor  
 2 x 600/150 m<sup>3</sup>/h  
 2 x Fire pumps and PTO from Main Engines  
 2 x 70mm fire outlets and Self-protection water spray system

**Accommodation:**

Wheelhouse to have 4 dampened seat for the crew, coxswain and navigator in the Fwd seats.  
 Commander and engine in the aft seats.  
 Storage area for passenger's luggage and equipment  
 Personal plug for PC/phone.  
 1 x Heads  
 1 x Showers  
 4 x Crew cabin with 4 bunks for 24 hr operations  
 Fully Air conditioned incl de-misting and heating  
 Galley  
 Low noise and vibration

**Propulsion & Gen Sets:**

Propulsion 2 x Hamilton Water jets or FPP

Engines 2 x Scania DI16 072M

Generator 2 x 12 kW 240 V 50 Hz

24 VDC starting for Main Engines and Gen Sets

Main 24 VDC battery bank with UPS for critical systems.

Emergency Battery in wheelhouse.

Solar panel option for main 24 VDC systems

**Navigational Equipment:**

1 X Radar

2 x 17 " LCD Display

Autopilot

Nav tex

AIS

2 GPS

Talkback/PA system and loud hailer

Four crew positions to be provided with inter comm two way voice conferences.

Speed log

Echo sounder

Anemometer

Horn

2 x GMDSS VHF DSC radio

FLIR and display

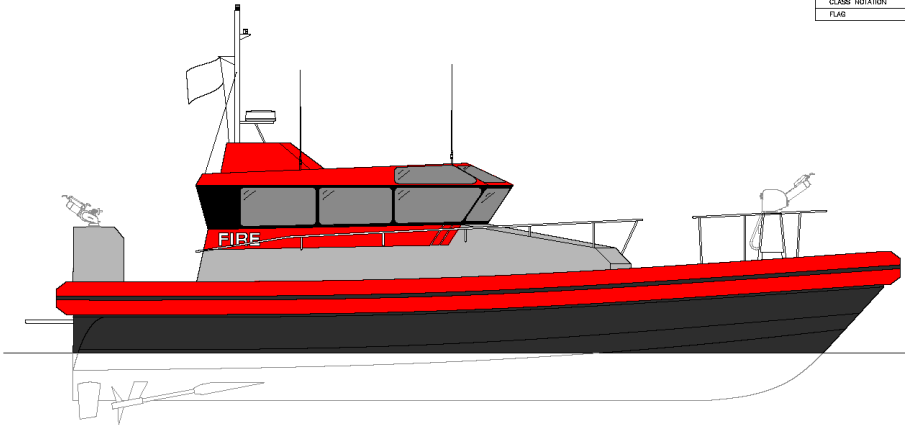
1 x remotely controlled search light auto tracking to radar

Integrated Bridge Control Navigation

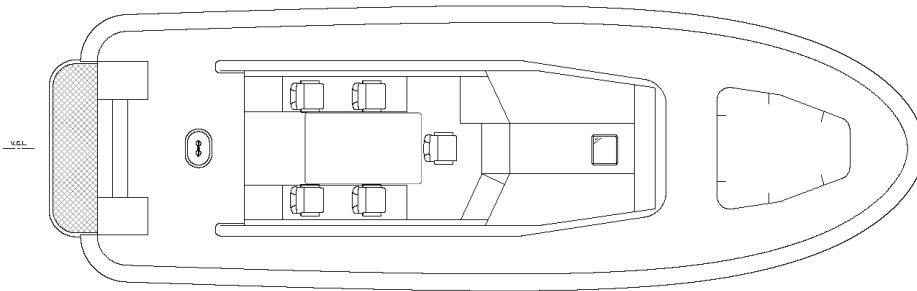
iRAMC (Intelligent Remote Asset Monitoring)

CCTV with 24 hr recording and display

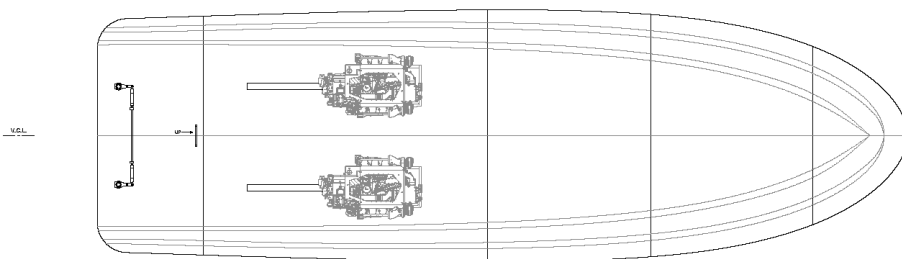
PRINCIPAL PARTICULARS	
LENGTH OVERALL	16.66 m
LENGTH HULL	16.00 m
LENGTH WATERLINE	14.81 m
MOLDED BEAM	4.56 m
MAXIMUM DRAUGHT	1.42 m
MAXIMUM DISPLACEMENT	35.00 t
LOADLINE LENGTH	15.50 m
FUEL OIL CAPACITY	2.00 m <sup>3</sup>
FRESH WATER CAPACITY	0.20 m <sup>3</sup>
BLACK WATER CAPACITY	0.20 m <sup>3</sup>
MAIN ENGINES	2 x SCANIA D18 D72M
PROPELLION	2 x S-GLIDE FPP
MAXIMUM SPEED	27.0 kn (100% WCR)
SERVICE SPEED	22.0 kn (80% WCR)
CLASS NOTATION	N/A
FLAG	UK FLAG WORKBOAT CODE CAT 2



OUTBOARD PROFILE



PLAN VIEW MAIN DECK



PLAN VIEW HULL

UNCONTROLLED COPY  
NOT TO BE USED FOR MANUFACTURE

PROJECT : 17m FIRE BOAT		WEIGHT (KG)	N/A
TITLE : GENERAL ARRANGEMENT		Checked By	-
		Checked Date	-
DWG No : FB17-700-01	Sheet of sheets 1 A	Issue A	Scale 1:40
		Drawn By J.W.	Drawn Date 17/04/18

ISSUE	MODIFICATION	MDD DATE
A	INITIAL DRAWING ISSUE	17/04/2018